

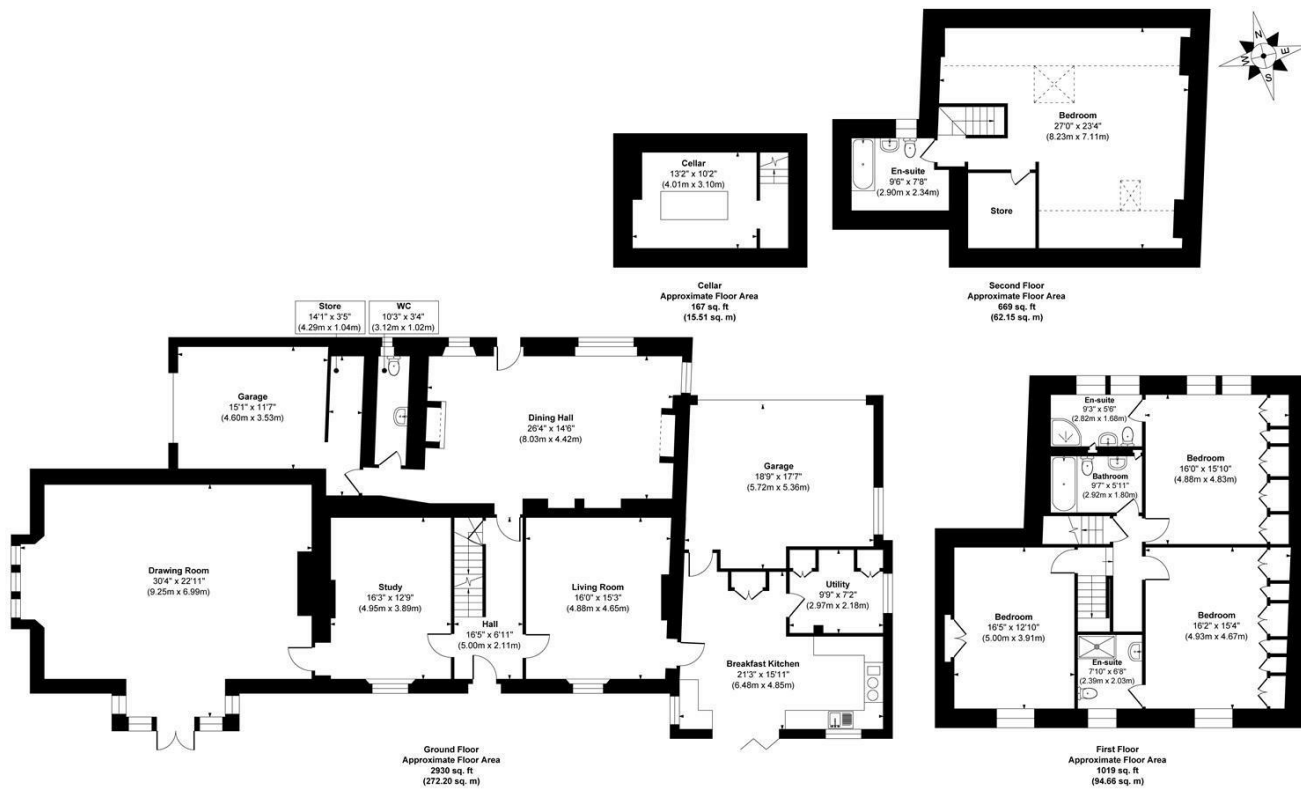


LARKFIELD GRANGE LARKFIELD GRANGE, LARKFIELD ROAD  
LEEDS, LS19 6DZ

£1,250,000  
FREEHOLD

MONROE

SELLERS OF THE FINEST HOMES



**Approx. Gross Internal Floor Area 4785 sq. ft / 444.52 sq. m**  
 Illustration for identification purposes only, measurements are approximate, not to scale.  
 Copyright © Show Home



Energy Efficiency Rating		Current	Potential
Very energy efficient - lower running costs			
(92 plus) <b>A</b>			
(81-91) <b>B</b>			
(69-80) <b>C</b>			
(55-68) <b>D</b>			
(39-54) <b>E</b>		<b>55</b>	<b>63</b>
(21-38) <b>F</b>			
(1-20) <b>G</b>			
Not energy efficient - higher running costs			
<b>England &amp; Wales</b>		EU Directive	
		2002/91/EC	

Agents Note: Whilst every care has been taken to prepare these particulars, they are for guidance purposes only. All measurements are approximate and are for general guidance purposes only and whilst every care has been taken to ensure their accuracy, they should not be relied upon and potential buyers/tenants are advised to recheck the measurements

Guiseley Sales  
 3a Oxford Road  
 Guiseley  
 Leeds  
 LS20 9AS

james@monroestateagents.com  
 monroestateagents.com

**MONROE**

SELLERS OF THE FINEST HOMES